

January 20, 2017

## Gilbane Construction Update

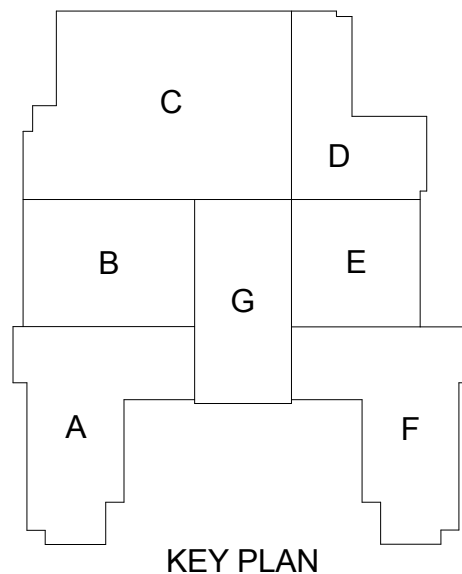
### Activities in progress as of January 20, 2017:

- ▶ Basketball goal installation in Area B Washington Level Competition Gym started.
- ▶ Painting spiral ductwork in Area C Washington Level Auxiliary Gym started.
- ▶ Masonry block fill in Cedar Level Area E in progress.
- ▶ Pool stainless steel gutter installation in progress.
- ▶ Elevators #1 & 2 installation in progress.
- ▶ Corridor quarry tile layout in 2<sup>nd</sup> floor Area A started.
- ▶ Gypsum board installation in 3<sup>rd</sup> floor Area G coffered ceiling started.
- ▶ Interior masonry partition walls in Area A Washington Level in progress.
- ▶ Painting mezzanine handrail in Area B Washington Level Competition Gym in progress.
- ▶ HVAC & glazing installation in Area C Washington Level Auxiliary Gym in progress.
- ▶ Carpet tile & rubber flooring installation in Areas A, F & G 2<sup>nd</sup> floor classrooms.

### Upcoming Project Milestones:

- ▶ Competition Gym wood flooring installation scheduled to start on 02/06/17.
- ▶ Vocal Level wood flooring installation scheduled to start on 02/02/17.
- ▶ Competition Gym telescoping bleacher installation scheduled to start on 03/17/17.

### Construction Key Plan:

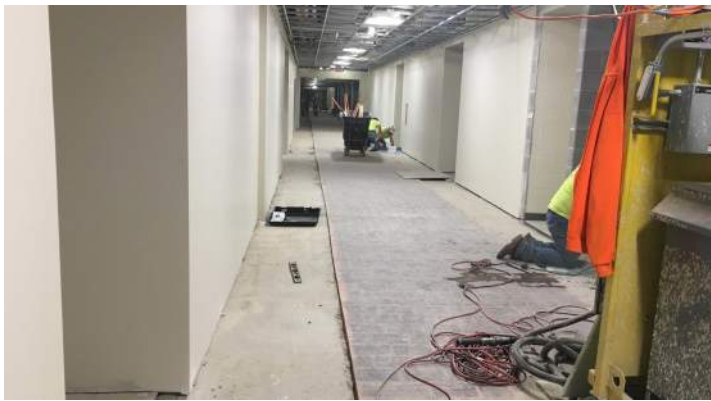




Basketball Goal Installation in Area B Competition Gym



Drywall Installation in Area G Vocal Level



Corridor Quarry Tile Layout 2nd Floor Area A



Painting Spiral Duct in Area C Auxiliary Gym



Elevator #2 Installation



Drywall Chauffeured Ceiling 3rd Floor Area G

